

Polypeptides

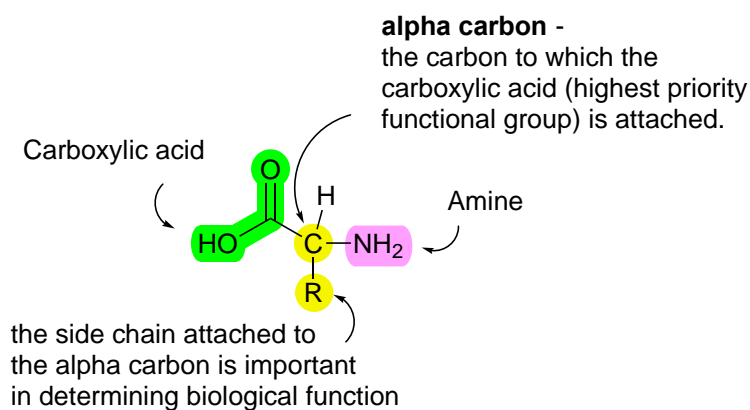
Table of Contents

<i>Summary</i>	227
----------------------	-----

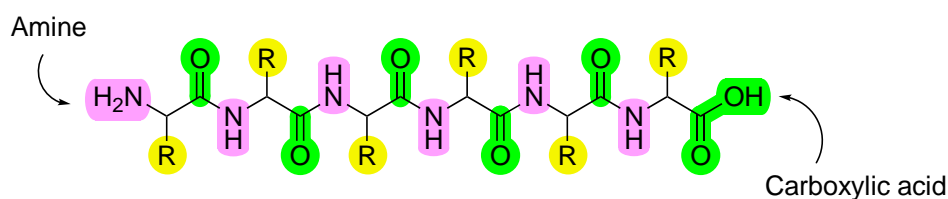
Summary

Polypeptides, more commonly known as proteins, are polymers of amino acids.

Recall the structure of amino acids:

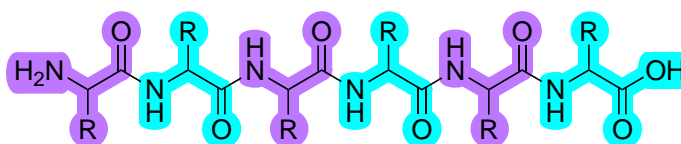


In a polypeptide molecule, students should be able to identify the side chain, amine and carboxylic acid components:

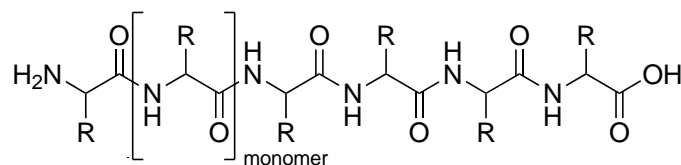


They should also be able to identify the amino acid monomer components:

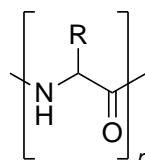
Represented in colour:



Represented using brackets:

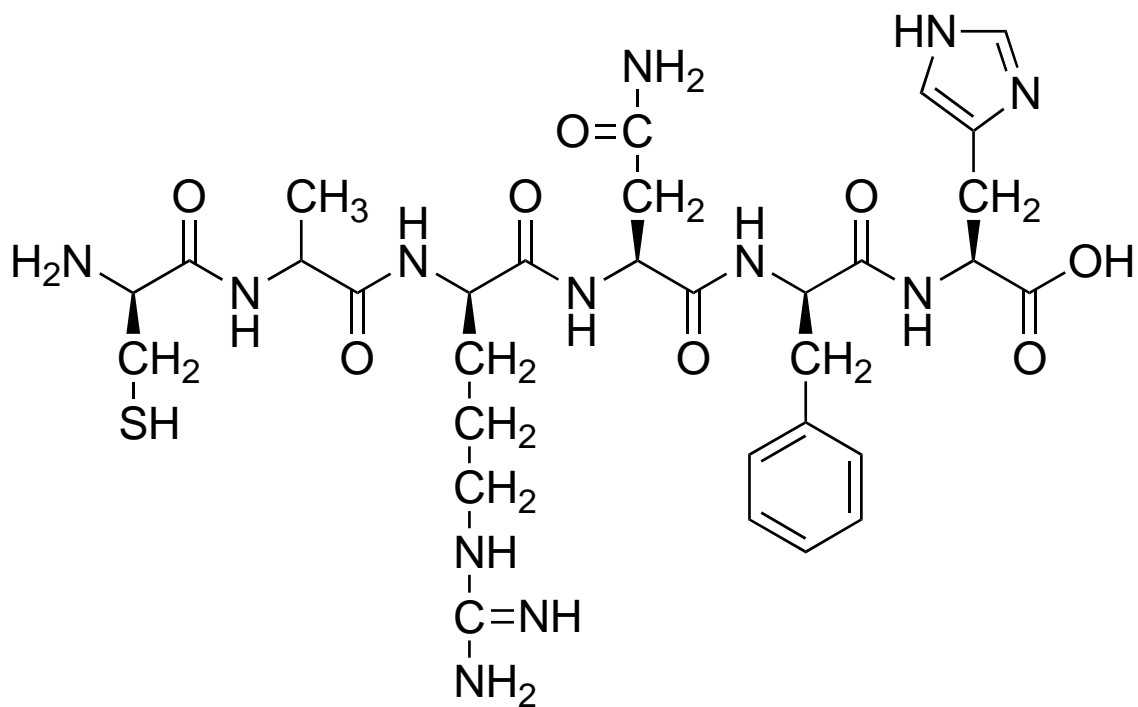


Monomer



Students need to be able to recognise polypeptides. However, they do not need to be named systemically.

Example of polypeptide showing amino acid side chains:



Cysteine

Alanine

Arginine

Asparagine

Phenylalanine

Histidine

*Names of amino acid side chains shown
Students do not need to remember these names.*